

# Dream

Cytus -Chapter R- OST

Original By: Rabpit & ICE

Transcript By: Hykilpikonna

Grand Piano

$\text{♩} = 80$

*pp*

This block contains the first system of the musical score, measures 1 through 4. It is for Grand Piano. The tempo is marked as quarter note = 80. The dynamics are marked as pianissimo (pp). The music is in 3/4 time. The right hand plays a continuous eighth-note melody, while the left hand plays a simple harmonic accompaniment of half notes.

5

This block contains the second system of the musical score, measures 5 through 8. The melody in the right hand continues with the same eighth-note pattern, and the left hand accompaniment remains consistent.

9

This block contains the third system of the musical score, measures 9 through 12. The musical structure continues with the established melody and accompaniment.

13

This block contains the fourth system of the musical score, measures 13 through 16. In measure 16, the right hand melody concludes with a descending eighth-note phrase, and the left hand accompaniment ends with a final half note.

17

mp

System 1 (Measures 17-20): Treble and bass staves. Treble clef, key signature of one flat (B-flat). Measure 17 starts with a piano dynamic marking (*mp*). The melody in the treble consists of eighth and quarter notes, while the bass line consists of eighth notes.

21

System 2 (Measures 21-24): Treble and bass staves. The melody continues with eighth and quarter notes in the treble, and eighth notes in the bass.

25

System 3 (Measures 25-28): Treble and bass staves. The melody continues with eighth and quarter notes in the treble, and eighth notes in the bass.

29

System 4 (Measures 29-32): Treble and bass staves. The melody continues with eighth and quarter notes in the treble, and eighth notes in the bass.

33

System 5 (Measures 33-36): Treble and bass staves. The melody continues with eighth and quarter notes in the treble, and eighth notes in the bass.

37



41



45



49



53



57 *8va*

58 59 60

61 *8va-1*

62 63 64

65

66 67 68

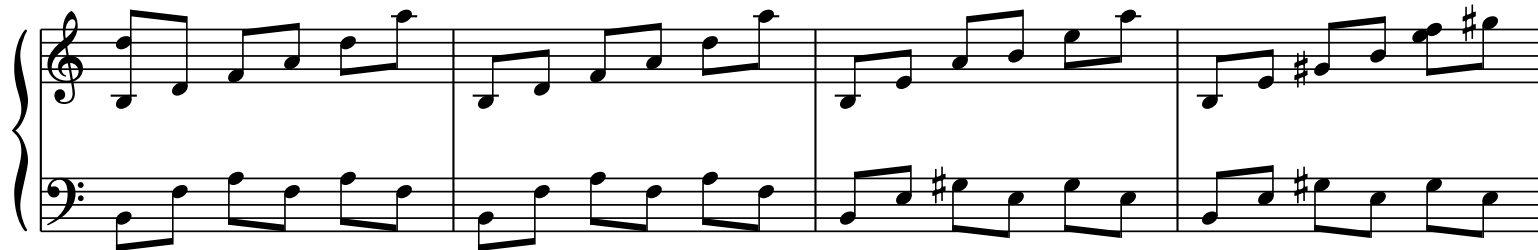
69

70 71 72

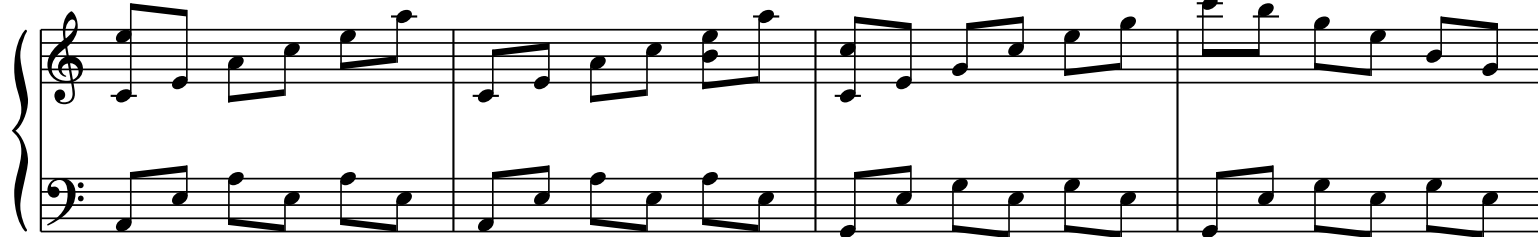
73

74 75 76

77



81



85



89



93



97

Measures 97-100 of a musical score. The system consists of a grand staff with a treble clef and a bass clef. The treble staff contains a whole note chord in the first three measures, which changes in the fourth measure. The bass staff contains a continuous eighth-note melody. A small '8' is written above the first measure of the treble staff.

101

Measures 101-104 of a musical score. The system consists of a grand staff with a treble clef and a bass clef. The treble staff contains a whole note chord in the first two measures, followed by a half note in the third measure, and a quarter note in the fourth measure. The bass staff contains a continuous eighth-note melody. A small '8' is written above the first measure of the treble staff.

105

Measures 105-108 of a musical score. The system consists of a grand staff with a treble clef and a bass clef. The treble staff contains a whole note chord in the first measure, followed by a half note in the second measure, and a half note in the third measure. The bass staff contains a continuous eighth-note melody. A small '8' is written above the first measure of the treble staff. A dashed line labeled '8va' connects the end of the eighth-note melody in the second measure to the beginning of the half note in the third measure. A slur is placed over the half note in the third measure and the half note in the fourth measure.